

WARRANTY

WARRANTY CONDITIONS

COMPLETE ALL SECTIONS AND RETURN THIS DOCUMENT ALONG WITH A) THE PRODUCT TO REPAIR AND B) THE ORIGINAL DATED PURCHASE RECEIPT

Client	Authorized Dealer	Product
Name		Model
Address		Serial Number
e-mail & Phone		

MOS extends a warranty to MOSCONI products for 24 months from the date of the original purchase as declared in the appropriate box and in the original purchase receipt. Enclose the dated purchase receipt when sending the product for return or repair to the authorized dealer.

The serial number of this certificate must correspond to the one stamped on the returned product.

MOS is not responsible for damages or injury caused by improper installation or operation of the product.

RTC-MOS

ENGLISH

MOSCONI

TECHNICAL CHARACTERISTICS

Supply: not necessary
Adjustment: 0 / -20 dB

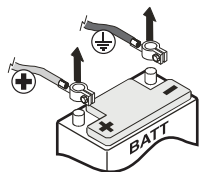
**OWNER'S MANUAL
WARNINGS
WARRANTY CARD**

MOSCONI reserves the right to modify or improve the products described here without notice. The availability of the displayed products may vary. Products described in this MANUAL are a portion of all MOSCONI products. All trademarks mentioned are used for descriptive purposes and all rights are reserved by their respective owners. The total or partial reproduction of this MANUAL is prohibited.

IMPORTANT: CAREFULLY READ THIS MANUAL TO FAMILIARIZE YOURSELF WITH ALL THE CONTROLS AND FUNCTIONS OF THIS PRODUCT. FOLLOW ALL NOTICES TO ENSURE THE SAFETY OF THOSE INSTALLING AND USING THE PRODUCT.



WARNING!
USE ONLY IN VEHICLES WITH A
12 VOLT NEGATIVE GROUND



WARNING!
DISCONNECT THE BATTERY
LEADS BEFORE INSTALLATION,
MAINTENANCE OR REMOVAL.

WARNING! CAUTION:

IN CASE OF TROUBLE IMMEDIATELY DISCONTINUE USE. Failure to comply may cause injury or damage the product. For repair please contact an authorized MOSCONI dealer.

DO NOT DISASSEMBLE OR MODIFY THE PRODUCT: This action may result in accidents, fire or electric shock. Any alteration or modification to the product immediately voids any expressed or implied warranty.

THE INSTALLATION AND CONNECTION OF THE PRODUCT SHOULD BE PERFORMED BY QUALIFIED PERSONNEL. The installation and connection of the product require specific technical background and experience. For safety reasons, always contact an authorized dealer to install the product in a correct way.

DO NOT INSTALL IN AREAS PARTICULARLY HUMID OR DUSTY. Avoid installing the product in areas excessively humid or dusty. Presence of humidity or dust inside the product can cause malfunction.

WHILE DRILLING HOLES, DO NOT DAMAGE TUBING AND CABLES. While drilling holes in your vehicle during installation, pay close attention to avoid damaging, blocking or contact with: tubing, the fuel lines, the fuel tank and electrical cables. Failure to follow these precautions will pose a fire hazard and damages.

USE THIS PRODUCT EXCLUSIVELY IN VEHICLES WITH 12V POWER. Using the product with electrical power other than 12V may cause fires, electric shock or other accidents.

DISCONNECT THE NEGATIVE (GROUND) BATTERY LEAD BEFORE CONNECTING THE PRODUCT. Failure to do so may cause electric shock or other damage and injury due to short circuit.

ENSURE PROPER CONNECTIONS. To avoid fire hazard and damage to the product, use cables of proper gauge and pay close attention to the polarity of the connections.

AVOID TANGLING THE CABLES TO VEHICLE PARTS. Make proper connections by following the instructions so that the cables do not interfere with proper vehicle operation. Cables that tangle with steering components, gear lever, brake pedals, etc may be dangerous.

LAY OUT THE CABLES TO ENSURE THAT THEY ARE NOT BENT OR COMPRESSED BY SHARP METAL EDGES. To avoid damaging or bending the cables, lay out the cables far from moving parts (such as the seat rails) and from sharp or pointy vehicle parts. If the cables are to pass through a hole in a metal sheet, use a rubber ring to ensure that the cable insulation won't be cut by any sharp edge.

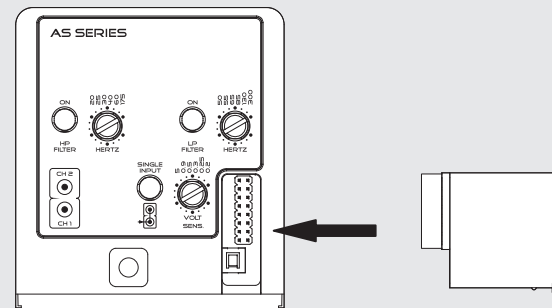
USE THE CORRECT ACCESSORY PARTS AND FOLLOW THE INSTALLATION INSTRUCTIONS. Be sure to use only specified accessory parts. Using other components may damage the product or result in improper installation. Components may not be connected securely and cause malfunction or danger.

DO NOT OPERATE THE PRODUCT IN WAYS THAT MAY DISTRACT YOUR ATTENTION FROM DRIVING. Any operation that requires continued attention must be done when the vehicle is at full stop. Always stop the vehicle in a safe area when performing such operations. Failure to do so may cause accidents.

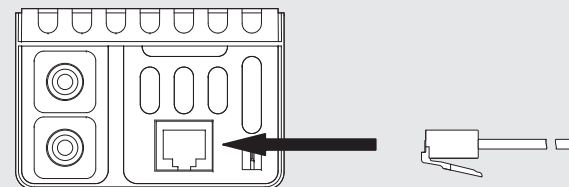
MAINTAIN THE VOLUME AT LEVELS THAT ALLOW EXTERNAL NOISES TO BE AUDIBLE WHILE DRIVING. Excessive volume levels, capable of blocking the sound of emergency vehicles, rail crossings, etc, may be dangerous and cause accidents. Furthermore, listening to audio at high volume inside a vehicle may cause damage to your hearing.

INSTALLATION

PLUGGING IN OF THE RTC-CARD



PLUGGING IN OF THE RTC CABLE



ADJUSTMEN



ADJUSTMENT:
from 0 to -20dB